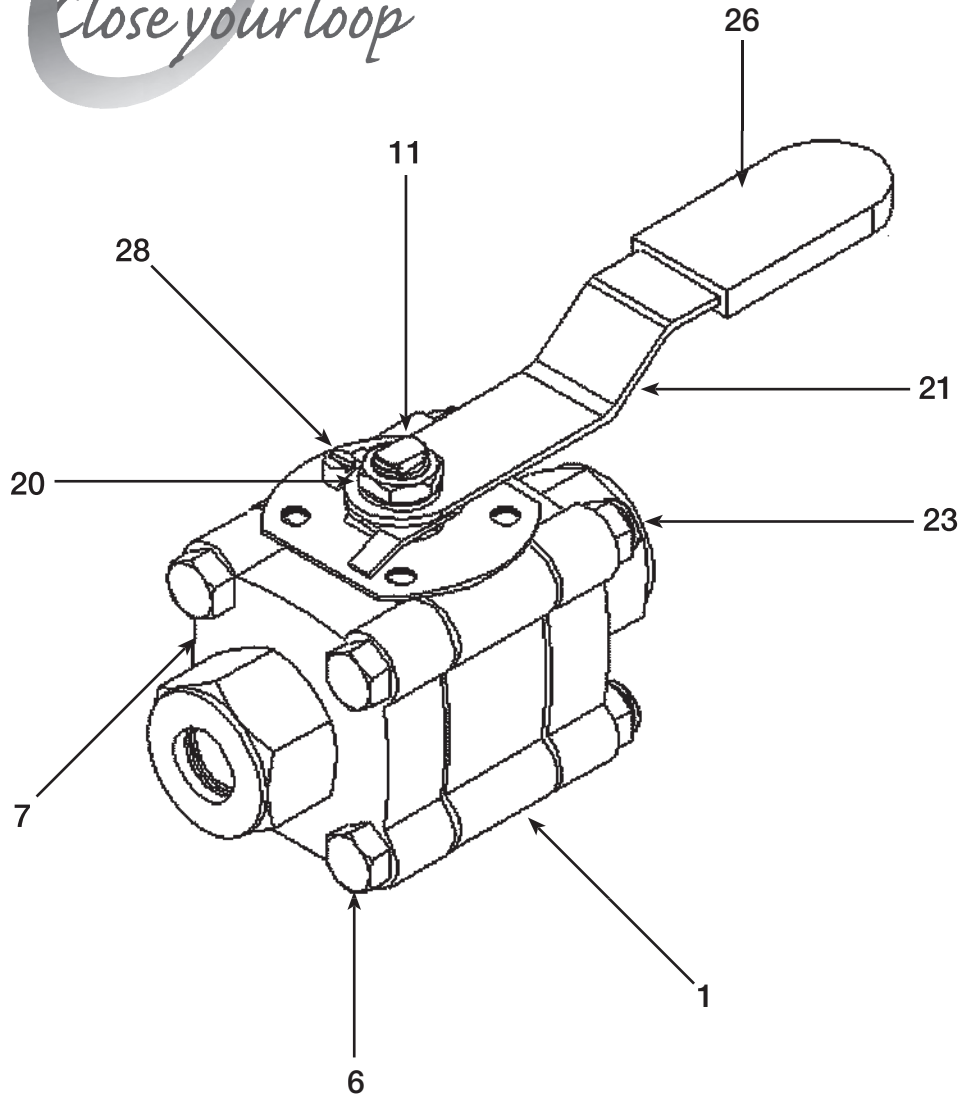


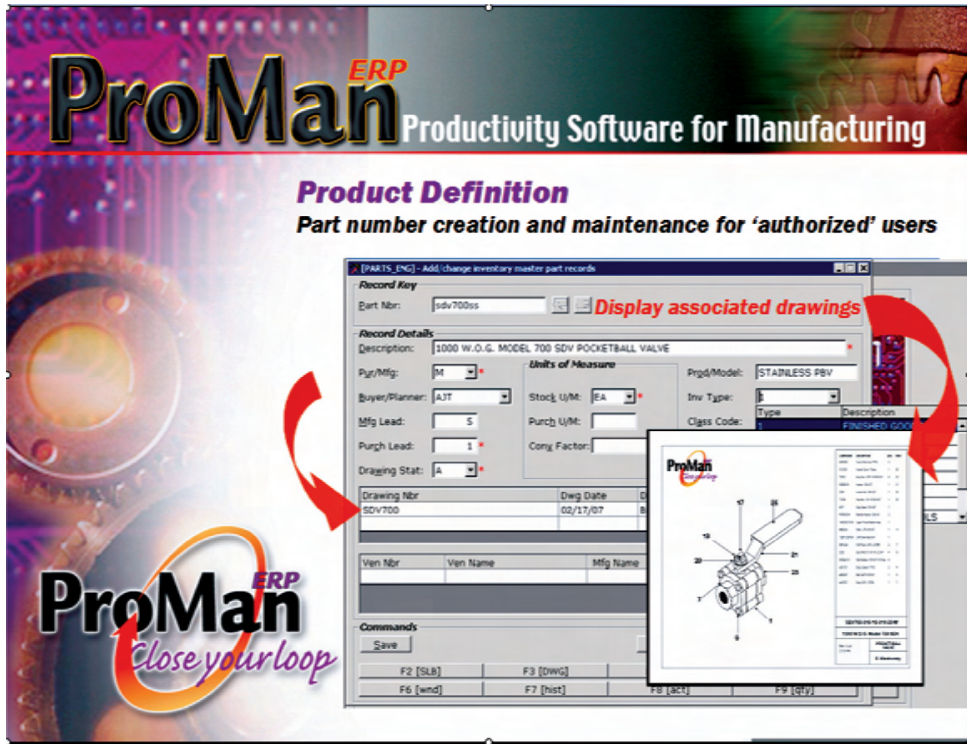
ProMan^{ERP}

Close your loop

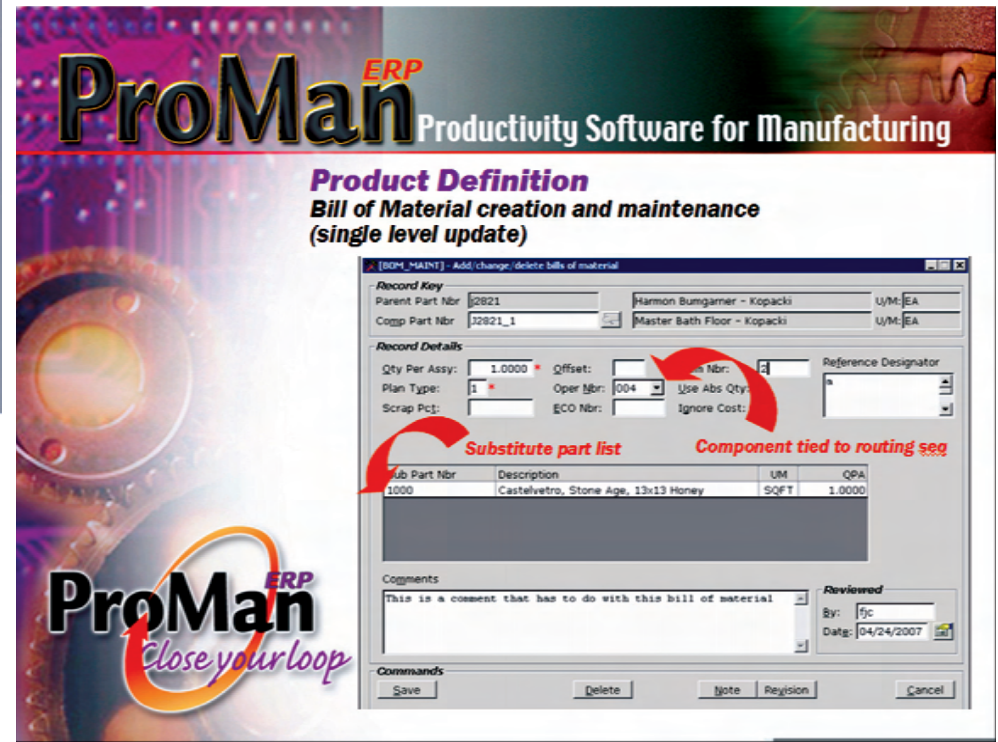


COMPONENT	DESCRIPTION	QPA	ITM #
Sd02263	Cavity Filler Seat PTFE	2	
010-009	Handle Cover / Plastic	1	26
TD012	Body Nut - 5/16"-18 304 SST	4	23
60B08016	Handle / 304 SST	1	21
2060	Handle Nut / 304 SST	1	20
TV388	Stop Nut - 3/8"-16 304 SST	1	28
6071	Stop Gland / 316 SST	1	
P3905X301	Bellville Washer / 304 SS	2	
1A290201012A	Upper Thrust Washer Assy	1	
MB202A	Stem - 276 316 SST	1	11
12B01122412A	LWR Stem Seal S/A	1	
Sd01inpt	End Piece / A351—CF8M	2	7
3320	Bolt-304 SST 5/16"-18 x 2-3/4"	4	6
6452a0-10	Split Washer- 316 SST 5/16" dia	4	
sd01151	Body Gasket / PTFE	2	4
sd02347	Ball / A276 316 SST	1	3
sd01601	Body A351—CF8M	1	1

SDV700-316-1C-010-20-M	
1000 W.O.G. Model 700 SDV	
Rev 1-A 2/21/06	Pocket Ball Valve
	E. Warshonsky



Create and maintain critical Engineering information
 ←



Bills of material don't just belong on a 'Drawing'
 →

ProMan^{ERP} works for Engineers also Critical engineering data is managed in one secure database and available for use only one keystroke away.

- Process definition
 - Bills of material
 - Engineering Change Control
 - Interface to Cad drawing files

